



VB400

VB400 BODY-WORN CAMERA

TAKE CONTROL OF THE SITUATION



VB400
RESILIENT.
POWERFUL.
CONNECTED.
SECURE.

SEAMLESS

VB400

Intended to support your workers when dealing with aggression or confrontations on a daily basis, the VB400 enables you to foster trust between your team and the public by providing an unbiased independent witness. See what your team sees and watch key decisions unfold, either in real time or after the fact.

The VB400 seamlessly fits around your existing workflows. All configuration and maintenance can be done ahead of time with our easy-to-use backend software, VideoManager – so your workers can grab their cameras and get to work with minimal training and disruption.

In the field, features including dual microphones, a wide-angle lens and intuitive buttons ensure that every interaction can be captured in high-definition from start to finish.

All footage is stored and encrypted on the VB400 until it is redocked, at which point it is offloaded securely and automatically.

But your cameras are just one part of your operation. Combine other pieces of technology – such as fixed video and Bluetooth sensors – with the VB400's superior connectivity for a more complete and effective response.





ALWAYS READY TO RECORD

EVERY ASPECT OF THE VB400, FROM ITS RESILIENT OUTER CASING TO THE WAY IT FITS ON YOUR UNIFORM, IS BUILT TO LAST – NO MATTER HOW OR WHERE YOUR TEAM WORKS.

Your body-worn cameras should fit around your organization's routine operations – which means accommodating a variety of shift patterns, environments, and uniforms. That's why the VB400 is as tough as your team is: compatible with whatever clothing they're wearing, it can record for however long they're on duty and withstand whatever conditions they encounter.



TEMPERATURE & WEATHER RESISTANT

The environment shouldn't stop you from getting the video you need. Operate in temperatures between -20°C and +50°C, with IP67 rating for protection against wind, rain and snow.



SHIFT-LONG BATTERY LIFE

Record for up to 12 hours continuously on a single charge. Configurable standby and safety modes preserve battery life.



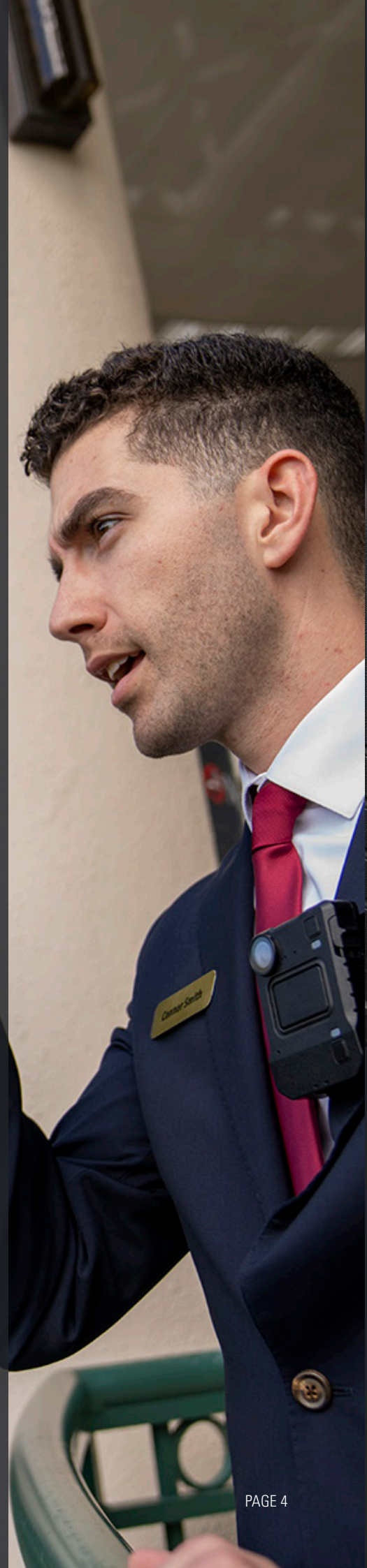
RUGGEDISED EXTERIOR

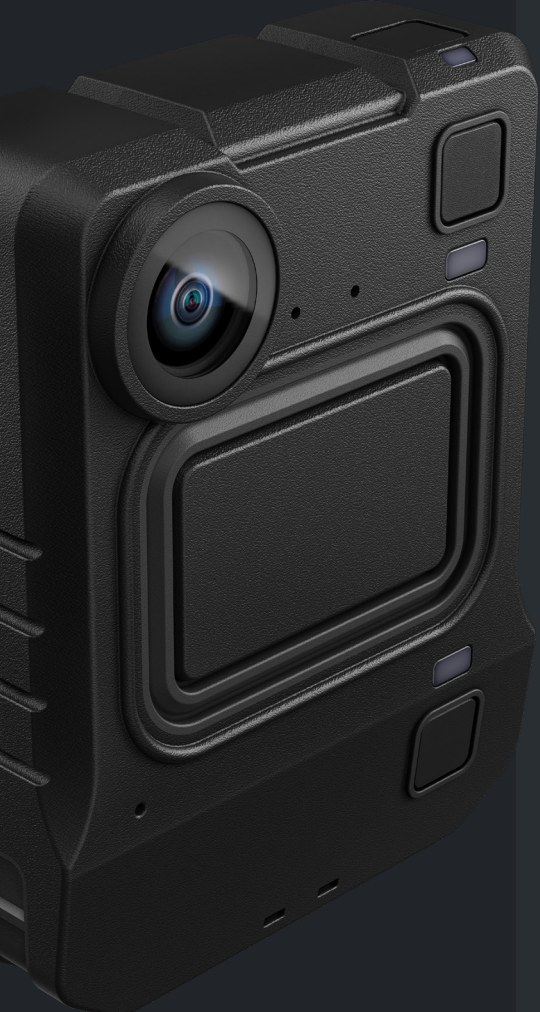
Protect your evidence in a resilient outer casing. Certified to MIL-STD-810G drop test requirements, the VB400 is built to withstand the rigours of the job – whatever that entails.



SECURE MOUNTING OPTIONS

Be confident in the knowledge that your VB400 will stay firmly attached to your uniform, regardless of whether you're wearing a shirt, jacket or protective clothing.





INTUITIVE OPERATION IMMEDIATE RESULTS

WITH ITS ERGONOMIC DESIGN, SEAMLESS CHECKOUT EXPERIENCE AND SIMPLE WORKFLOWS, THE VB400 IS EASY TO USE DAY-TO-DAY AND ENSURES YOUR TEAM CAN CAPTURE SUPERIOR EVIDENTIAL VIDEO WHEN IT'S NEEDED MOST.

Your workers have enough to think about already; they don't always have time to focus on operating their body-worn cameras when an event starts unfolding. Instead, you can adapt VB400 behaviour to the different roles and responsibilities within your team, and enable pre- and post-record, so it's easy for them to get that all-important video evidence.



CONFIGURABLE RECORDING BEHAVIOUR

Map a variety of actions to the VB400's five buttons, and enable or disable LEDs, vibrations and beeps as necessary.



PRE- AND POST-RECORD

Capture the crucial seconds – or minutes – immediately before and after a situation, to document a full frame of reference and ensure protocol has been followed.



HIGH-QUALITY VIDEO

See events in high-definition – 1080p, 30fps, with a wide-angle 120° horizontal field of view – in conditions as dark as 0.2 lux.



IMMEDIATE FOOTAGE OFFLOAD

As soon as a VB400 is docked, any footage stored on it is automatically transferred securely to VideoManager – with no further user intervention required.



CONNECTED



SEE THE BIGGER PICTURE

WHETHER YOU'RE USING A SINGLE CAMERA OR STREAMING LIVE BODY-WORN AND FIXED VIDEO INTO THE SAME VMS, THE VB400'S CONNECTIVITY ENABLES YOU TO UNDERSTAND THE FULL CONTEXT OF A SITUATION.

Body-worn cameras provide an invaluable first-person perspective. And now, these insights aren't just after the fact; equipped with multiple ways to connect, the VB400 gives you crucial insights when you need them most. Use Peer-Assisted Recording to ensure every angle is being documented, stream over Wi-Fi to the Video Management System (VMS) that handles your fixed CCTV cameras, and use built-in GPS to keep track of your team's locations.



THIRD PARTY VMS INTEGRATION

Maximise your existing investments by centralizing both body-worn and fixed camera live streams in any ONVIF-compatible platform.



PEER-ASSISTED RECORDING

Minimise workload for responding workers; your VB400s can be triggered to start recording immediately, when another one does so in a configurable radius.



GPS LOCATION TRACKING

Keep your workers safe using the Tactical VideoManager interactive map – or leverage VideoManager's powerful API to interface with your own software.



RADIO INTEGRATION

Reduce your teams' workload; trigger VB400s to start recording when Motorola Solutions radios enter an emergency state.



MAINTAIN EVIDENTIAL INTEGRITY

YOUR VB400 AUTOMATICALLY ENCRYPTS AND SECURES THE FOOTAGE IT RECORDS – SO ONLY AUTHORISED USERS CAN ACCESS IT, VIA SPECIALISED BACKEND SOFTWARE, FOR PROCESSING AND REVIEW PURPOSES.

Once your team has resolved a situation, it's imperative that the evidential video they captured is kept safe until it can be offloaded. The VB400's hardware is designed to prevent bad actors from gaining access to its encrypted internal storage; no footage can be viewed unless the camera is redocked and connected to an approved instance of VideoManager.



SEALED UNIT DESIGN

No footage stored on the VB400 can be accessed, either by its operator or anyone else, without first being downloaded to VideoManager.



ENCRYPTION AT REST AND DURING TRANSIT

VB400s secure their recorded footage with AES 256 encryption. Once docked, they offload data to VideoManager via a TLS1.2 protocol.



SYSTEM-SPECIFIC ACCESS CONTROL KEYS

Ensure that the footage stored on your VB400s is irretrievable unless the cameras are docked to an instance of VideoManager with the corresponding key.



FOOTAGE VERIFICATION

Confirm that a piece of footage has not been tampered with or edited, using certificate-based footage signing and SHA256 hashes.



SECURE



OPTIMISE CAMERAS FOR EVERY USER

VIDEOMANAGER: DEVICE & VIDEO MANAGEMENT MADE EASY

Managing a body-worn video programme doesn't have to be hard. VideoManager provides the flexibility you need to easily administer cameras and efficiently store, prepare and share recorded footage – no matter the size of your deployment or how sophisticated you want your programme to be.





CUSTOMISE CAMERA BEHAVIOUR

Tailor your devices to your organization – so when they're acting as deterrents and capturing vital evidence, it's even easier for your team to use them in critical moments.



SECURELY PROCESS BODY-WORN VIDEO

Designed to maintain a video's chain of custody from the moment it enters the system, VideoManager natively stores and encrypts the media created by your VB400s.



INTERFACE & INTEGRATE

Get the most from your cameras with connections to Bluetooth peripherals, two-way radios, third party VMSs and the VB SmartControl app – all configured from VideoManager.



MONITOR & UPGRADE

Keep things running with minimal intervention. Every aspect of a camera's workflow – from assigning it to a user, to upgrading its firmware – can be completed easily on VideoManager.



For more information, please visit: www.motorolasolutions.com/vb400

Motorola Solutions Ltd. Nova South, 160 Victoria Street, London, SW1E 5LB, United Kingdom.

Availability is subject to individual country law and regulations. All specifications shown are typical unless otherwise stated and are subject to change without notice.

MOTOROLA, MOTO, MOTOROLA SOLUTIONS and the Stylized M Logo are trademarks or registered trademarks of Motorola Trademark Holdings, LLC and are used under license. All other trademarks are the property of their respective owners. ©2023 Motorola Solutions, Inc. All rights reserved. (01-23)

